

# PORTOFINO

Our largest collection, the Portofino comes in three eco-friendly ceramic shapes and eight different fiberglass looks, from small to tall and square to round. Depending on the finish you choose, it is sure to work well in both contemporary and



## CERAMIC

P/N	OD	Top ID	Bottom ID	IH	Wt.	Saucer	Plexi
PRT-08	8"	7"	6"	5 3/4"	5.	SC-08	6"
PRT-10	11 1/4"	9 1/4"	7 1/2"	8"	11 lbs.	SC-09	8"
PRT-14	15 1/2"	12"	10 3/4"	11 1/2"	23 lbs.	SC-12	12"
PRT-18	19"	16"	14"	14 1/2"	42 lbs.	SC-16	14"
PRT-22	23 3/4"	21 1/2"	17 1/2"	18"	67 lbs.	SC-20	18"
PRT-26	29 1/2"	26"	21 1/2"	26"	121 lbs.	SC-24	20"

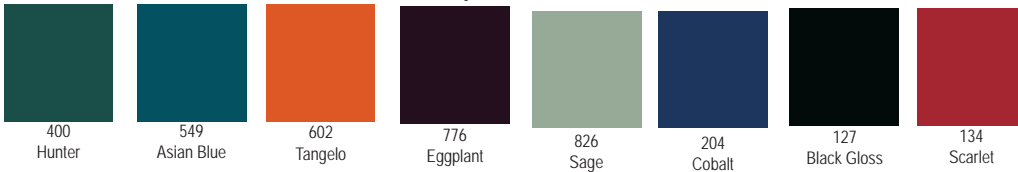
## FIBERGLASS

P/N	OD	Top ID	Bottom ID	IH	Wt.	Saucer	Plexi
F-PRT-08	8 1/2"	7"	6 1/2"	7"	4 lbs.	F-SC-08	6"
F-PRT-10	11"	9"	8 1/2"	8 1/2"	7 lbs.	F-SC-10	8"
F-PRT-14	14 1/2"	11 1/2"	11 1/2"	11"	10 lbs.	F-SC-14	10"
F-PRT-18	19"	16"	15 1/2"	15"	12 lbs.	F-SC-16	14"
F-PRT-22	21 1/2"	18 1/2"	18"	18 3/4"	15 lbs.	F-SC-20	18"
F-PRT-26	29 1/2"	26"	23"	23"	18 lbs.	F-SC-24	22"
F-PRT-30	35 1/2"	30 1/2"	27 1/4"	26"	32 lbs.	F-SC-30	26"
F-PRT-36	43"	36 1/2"	34"	28 1/2"	60 lbs.	F-SC-36	33"
F-PRT-48	56"	48"	45"	34"	80 lbs.	N/A	44"

### Gloss



103 White Gloss, 104 Clear, 106 Burgundy, 125 \* Gray, 126 Charcoal



400 Hunter, 549 Asian Blue, 602 Tangelo, 776 Eggplant, 826 Sage, 204 Cobalt, 127 Black Gloss, 134 Scarlet

### Matte

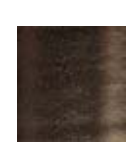


101 Buff, 102 White Matte, 107 Black Matte, A110 Java, 175 Espresso, 300 Terra Cotta, 301 Khaki, 303 \* Oyster



A902 \* Slate, 307 Wheat, 580 Oatmeal, 600 Limoncello, 601 Pumpkin Spice, 603 Martini Olive, A901 \* Sea Buff

### Metallic



627 \*\* Golden Bronze



980 \*\* Topaz



952 \*\* Silverado

### Color Chart

\* Available in Ceramic only

\*\* Available in Fiberglass only

Color variations are inherent characteristics of all planters. Colors are represented as accurately as possible. Photographic procedures may alter the colors and images shown may vary slightly from the photo. For best results please call for a sample.